

Milraz[®] WP 76

Contains: *Propineb* 700g/kg
Cymoxanil 60g/kg

Milraz[®] is a broad spectrum preventive and curative fungicide for the control of fungal diseases in vegetables, fruits and ornamentals.

Mode of action

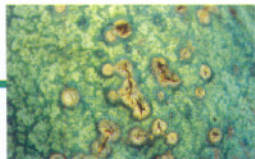
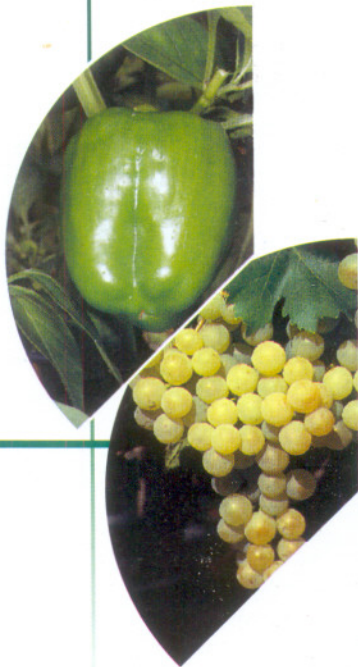
Milraz[®] has fast action combined with good persistence. Milraz[®] displays local systemic action.

Physical Properties

Milraz[®] has good sticking property and resistance to rain. The uniform visible deposit of Milraz[®] on the leaves enables the operator to ascertain applications.

Milraz[®] Outstanding Performance

- Checks build up of spidermites
- Suppresses Powdery mildew, Rust and Botrytis
- Displays no cross-resistance to the acylalanine group of fungicides
- Is non-toxic to bees. Can be sprayed to flowering plants while bees are foraging



Crop Tolerance

Milraz[®] displays good crop tolerance when used at recommended rates.

Compatibility

Milraz[®] is compatible with foliar fertilizers e.g. Bayfolan and most Bayer CropScience insecticides and fungicides. However, tank-mix compatibility test should always be carried out prior to mixing commercial quantities. Spray immediately after mixing.



Application

Apply as a full cover spray ensuring an even and thorough coverage of all plant surfaces.

Dosage Rates and Timing of Application

Crops	Diseases	Application Rates	RatesTiming/Remarks
Potatoes Tomatoes	Early blight Late blight	2kg / ha 40g / 20 lts of water	Apply first spray before disease symptoms appear and as soon as climatic conditions are favourable for blight development - cool overcast conditions followed by humid weather. Repeat at 14 days interval. Reduce spray interval to 7-10 days when infection has occurred or in irrigated crop. Pre-harvest interval (PHI): potatoes; 14 days, tomatoes; 7 days.
Onions	Downy mildew Purple blotch	2kg / ha 40g / 20 lts of water	Apply first spray before disease symptoms appear and as soon as climatic conditions favour disease development. Repeat at 14 days interval. Reduce spray interval to 7-10 days when infection has occurred. Pre-harvest interval (PHI): 14 days.
Grapes	Downy Mildew Anthracnose	2kg / ha 40g / 20 lts of water	Apply first spray before disease symptoms appear and as soon as climatic conditions favour disease development. Repeat at 14 days interval. Reduce spray interval to 7-10 days when infection has occurred. Pre-harvest interval (PHI): 14 days on wine grapes, 4-6 weeks for table grapes.
Cucurbits, Water Melon, Squash/Cucumber	Downy Mildew Anthracnose	2kg / ha 40g / 20 lts of water	Apply first spray before disease symptoms appear and as soon as climatic conditions favour disease development. Repeat at 14 days interval. Reduce spray interval to 7-10 days when infection has occurred. Pre-harvest interval (PHI): 7 days.
Ornamentals: Roses, Lesianthus etc.	Downy Mildew	2kg / ha 40g / 20 lts of water	Apply first spray before disease symptoms appear and when climatic conditions favour disease development. Repeat at 14 days interval. Reduce spray interval to 7-10 days when infection has occurred. Pre-harvest interval (PHI): 7-14 days

Water volume: 1,000 litres per hectare (depending on crop size and density of vegetation)

Note: As different species and varieties of ornamentals may differ in their sensitivity to pesticides, users are advised to always check for the crop tolerance by first treating a few plants before large scale application is undertaken.

